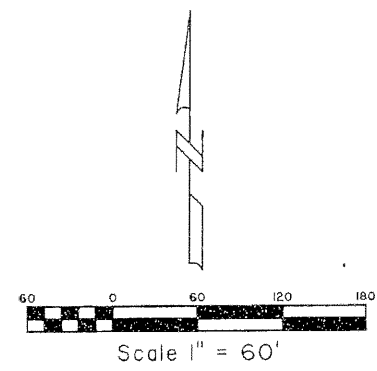
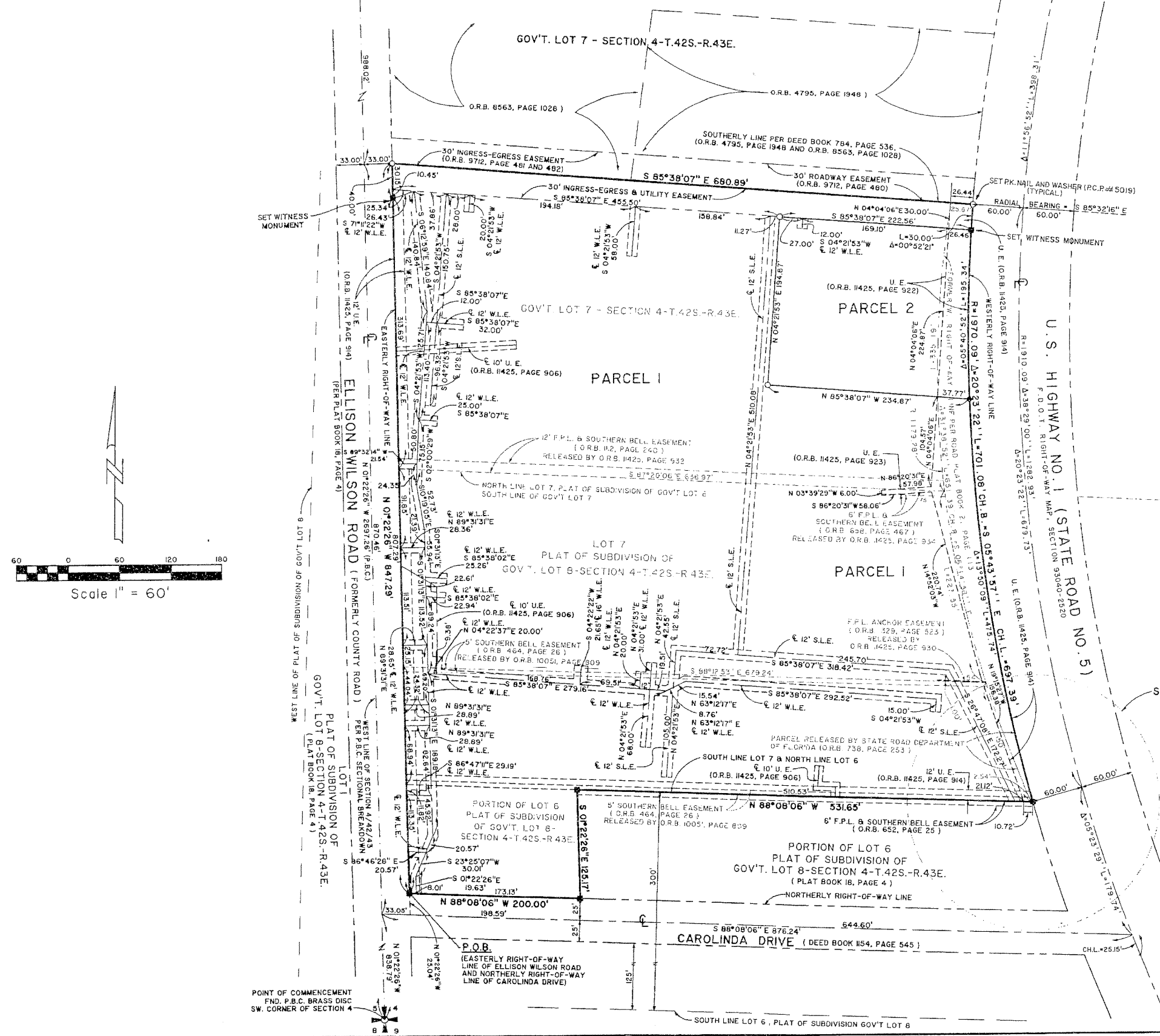


NORTH PALM MARKETPLACE

A PARCEL OF LAND BEING IN GOVERNMENT LOT 7, SECTION 4, TOWNSHIP 42 SOUTH, RANGE 43 EAST, PALM BEACH COUNTY, FLORIDA, TOGETHER WITH LOT 7 AND A PORTION OF LOT 6, PLAT OF SUBDIVISION OF GOVERNMENT LOT 8, SECTION 4, TOWNSHIP 42 SOUTH, RANGE 43 EAST, AS RECORDED IN PLAT BOOK 18, PAGE 4, PUBLIC RECORDS OF PALM BEACH COUNTY, FLORIDA.

VILLAGE OF NORTH PALM BEACH
SHEET 2 OF 2

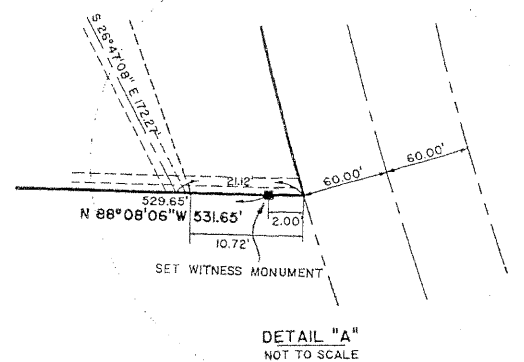
FND. P.B.C. BRASS DISC
W. 1/4 CORNER OF SECTION 4



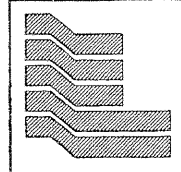
NOT PLATTED

PLAT OF SUBDIVISION OF
GOV'T. LOT 8-SECTION 4-T.42S.-R.43E.
(PLAT BOOK 18, PAGE 4)

SEE DETAIL "A"



POINT OF COMMENCEMENT
FND. P.B.C. BRASS DISC
SW. CORNER OF SECTION 4



Landmark Surveying & Mapping Inc.
1850 Forest Hill Boulevard
Ph. (561) 433-5405 Suite 100 W.P.B. Florida
LB # 4396

NORTH PALM MARKETPLACE